

1 2 3 4 5 6 7 8

REVISIONS		
ISS	ZONE	DESCRIPTION\PER REQUEST\DATE
B	ALL	DESIGN WAS CHANGED\RD-DM080225001\02-25-'19

F

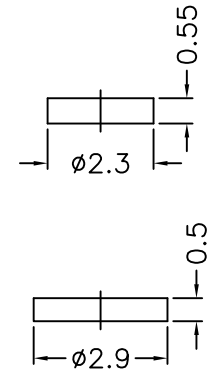
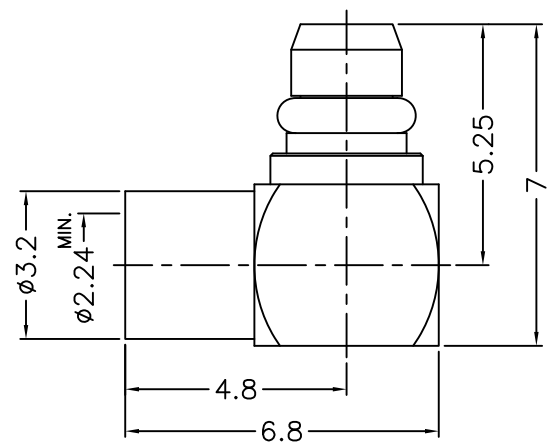
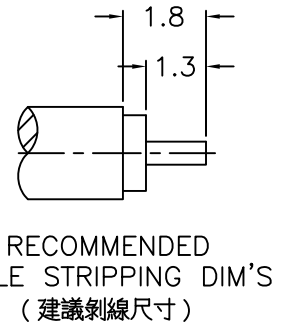
E

D

C

B

A



- NOTES: FINISH (PLATING THICKNESS IN MICRO-INCHES)
- BRASS
  - THIN GOLD OVER NICKEL PL. 50 MIN. THICK OVER COPPER PL. 50 MIN. THICK
  - BERYLLIUM COPPER
  - GOLD PL. 3 MIN. THICK OVER NICKEL PL. 50 MIN. THICK OVER COPPER PL. 50 MIN. THICK
  - TEFLON

RoHS COMPLIANT

1. CONTACT PIN TO SOLDER

6	COVER	NOTE 1	NOTE 2	1	CV-29-05	DIMENSIONS ARE IN MILLIMETERS  UNLESS OTHERWISE SPECIFIED TOLERANCES 0.5-6 = ±0.2 6-30 = ±0.4 30-120 = ±0.6 120-315 = ±1 315-1000 = ±1.6 1000-2000 = ±2.4	PART NO.		<h1>G.L.I.</h1>	
5	INSULATOR	NOTE 5	NATURAL	1	200-1182A1-5T		APPROVED	DATE		TITLE
4	RETAINER RING	NOTE 3	NOTE 2	1	200-1000-5			02-25-'19		MMCX R/A SEMI-RIGID PLUG (FOR .085" , .086")
3	CONTACT PIN	NOTE 1	NOTE 4	1	200-1182A1-3		CHECKED	DATE		DRAWING NO.
2	INSULATOR	NOTE 5	NATURAL	1	200-1182A1-2-50T			02-25-'19		200-1182A2-28-50
1	BODY	NOTE 1	NOTE 2	1	200-1182A1-1-28	DRAWN	DATE	FILE NO.	R:\D\G\DWG\200\1182A2\28\50	
NO.	DESCRIPTION	MATERIAL	FINISH	Q'TY	DRAWING NO.	SCALE	6/1	ISSUE	B	

1 2 3 4 5 6 7 8