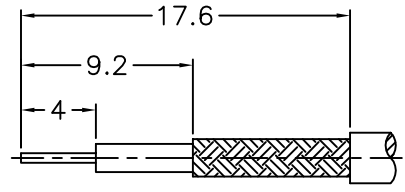


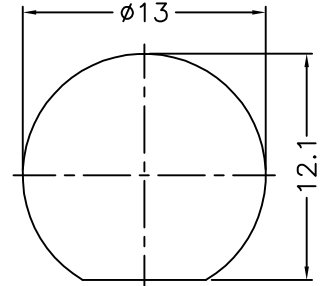
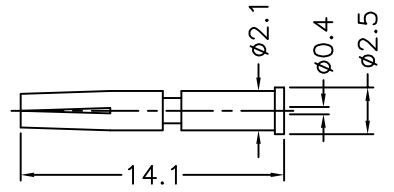
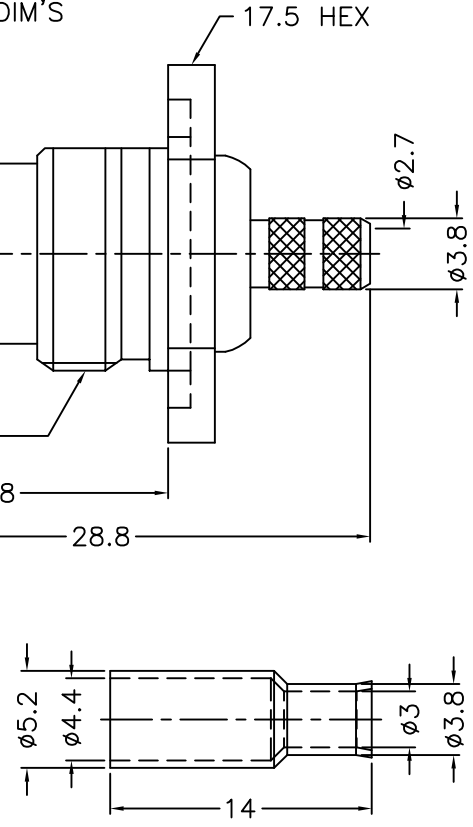
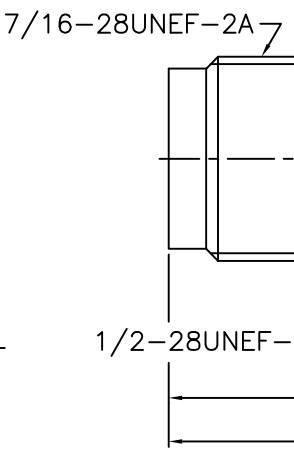
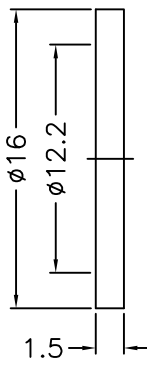
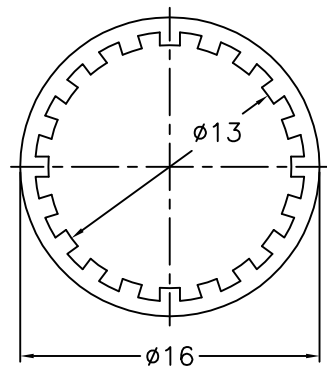
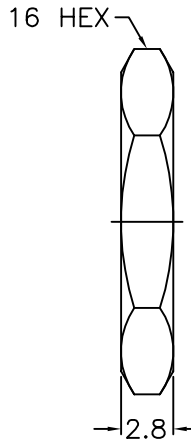
1 2 3 4 5 6 7 8

REVISIONS			
ISS	ZONE	DESCRIPTION\PER REQUEST\DATE	



1. CRIMPED FERRULE  
HEX. CRIMP SIZE .178"
2. CRIMPED CONTACT PIN  
HEX. CRIMP SIZE .068"
3. MAX. PANEL THICKNESS=3.5mm

RECOMMENDED  
CABLE STRIPPING DIM'S  
(建議剝線尺寸)



RECOMMENDED  
MOUNTING HOLE  
(建議架設孔)

- NOTES: FINISH (PLATING THICKNESS IN MICRO-INCHES)
1. BRASS
  2. NICKEL PL. 100 MIN. THICK OVER COPPER PL. 50 MIN. THICK
  3. PHOSPHOR BRONZE
  4. GOLD PL. 3 MIN. THICK OVER NICKEL PL. 50 MIN. THICK OVER COPPER PL. 50 MIN. THICK
  5. DELRIN

10	FERRULE	NOTE 1	NOTE 2	1	FR-44-52-30-38-140
9	SLEEVE	DELIN	NATURAL	1	SL-17-25-129
8	CONTACT PIN	NOTE 3	NOTE 4	1	900-6000-8-0.4
7	HEX NUT	NOTE 1	NOTE 2	1	HN-16-1228-28
6	LOCK WASHER	NOTE 1	NOTE 2	1	LW-13-16-05
5	GASKET	RUBBER	RED	1	GS-122-160-15
4	BARREL	NOTE 1	NOTE 2	1	900-6421E1-4-02
3	INSULATOR	NOTE 5	NATURAL	1	900-6000-3-75D
2	BODY	NOTE 1	NOTE 2	1	71628-6000-2
1	HOUSING	NOTE 1	NOTE 2	1	900-6421E1-1

DIMENSIONS ARE IN MILLIMETERS				PART NO.		G.L.I.	
UNLESS OTHERWISE SPECIFIED TOLERANCES 0.5-6 = ±0.2 6-30 = ±0.4 30-120 = ±0.6 120-315 = ±1 315-1000 = ±1.6 1000-2000 = ±2.4				APPROVED	DATE 10-01-'13		TITLE TNC BULKHEAD CRIMP JACK (FOR RG-179/U, 187/U CABLE)
				CHECKED	DATE 10-01-'13		DRAWING NO. 71628-6421E2-03-75D
				DRAWN	DATE 10-01-'13		FILE NO. R:\D\G\DWG\71628\6421E2\03\75D
				SCALE 2.5/1	ISSUE A		

NO.	DESCRIPTION	MATERIAL	FINISH	Q'TY	DRAWING NO.
-----	-------------	----------	--------	------	-------------

1 2 3 4 5 6 7 8

F  
E  
D  
C  
B  
A

F  
E  
D  
C  
B  
A