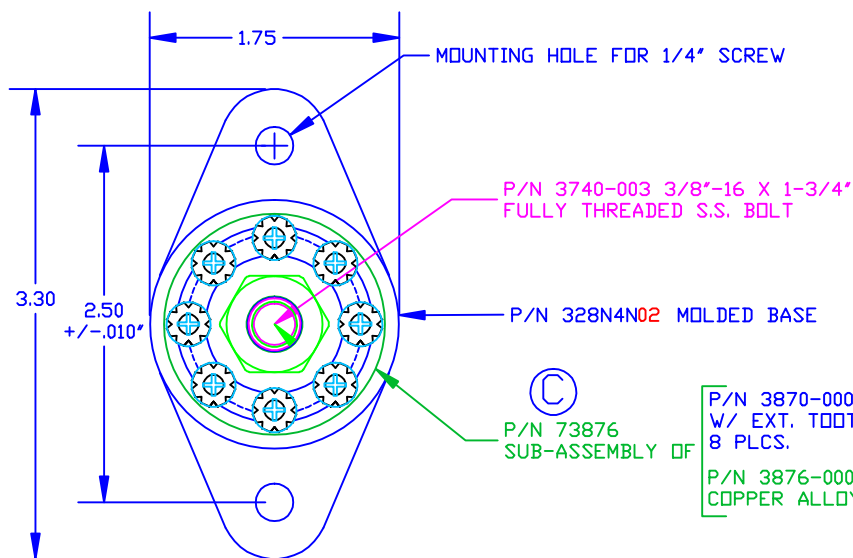
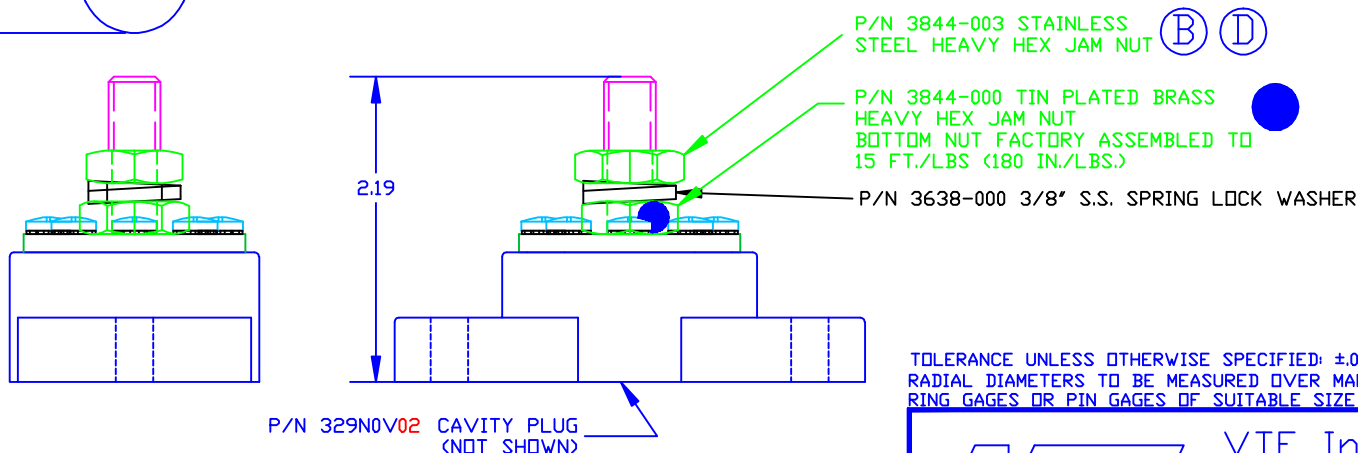


THE INFORMATION CONTAINED IN THIS DRAWING IS THE SOLE PROPERTY OF VTE INCORPORATED. ANY REPRODUCTION IN PART OR WHOLE WITHOUT THE WRITTEN PERMISSION OF VTE INCORPORATED IS PROHIBITED.

LTR.	REVISIONS	DATE
A	ADDED COMPONENT P/N SUFFIXES	04APR06
B	3844-002 WAS 3844-000	10OCT06
C	ADDED SUB-ASSEMBLY P/N 73876	11OCT06
D	3844-003 WAS 3844-002	30JAN07

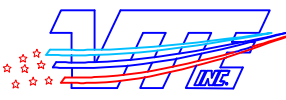


DO NOT SCALE



TOLERANCE UNLESS OTHERWISE SPECIFIED: ±.030"/±0.8mm  
RADIAL DIAMETERS TO BE MEASURED OVER MANDRELS, RING GAGES OR PIN GAGES OF SUITABLE SIZE

BASE MATERIAL: GLASS-REINFORCED NYLON  
 BASE MATERIAL U.L. RATING: 94 HB  
 BUS MATERIAL: NICKEL PLATED COPPER ALLOY  
 VOLTAGE RATING: 48 VOLTS DC MAX.  
 BUS AMPERAGE RATING: 160 AMPS DC ( 8 X 20 AMP CIRCUITS )  
 TEMPERATURE RISE AT LOAD: 27.9 DEG. C. (52 DEG. F.)  
 RECOMMENDED MAXIMUM TORQUE: 12 FT./LBS. (144 IN./LBS.)



**VTE Incorporated**  
 5437 Robinson Road, P.O. Box 790  
 Pellston, Michigan 49769  
 Telephone: 1-800-527-9256, 231-539-8000  
 FAX: 231-539-0914

REF: *****	DATE: 09APR03	DRN BY: BRH	WEIGHT: *****
TITLE: 3/8" POWER DISTRIBUTION POST			SCALE: NONE
MATERIAL: NOTED		PART NO.	
COLOR: RED	DRG CLASS: *****	<b>77837N02</b>	