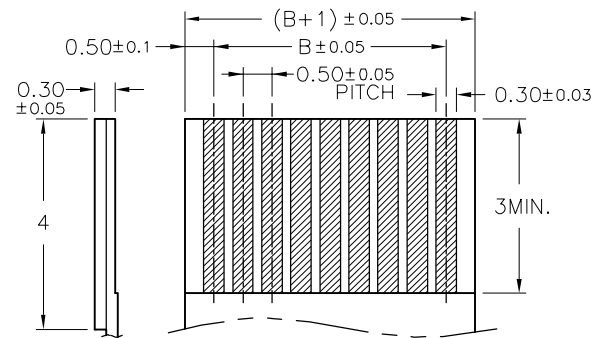
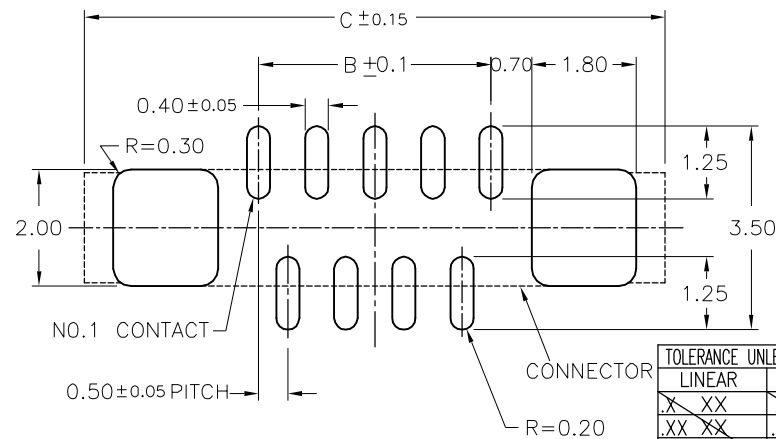
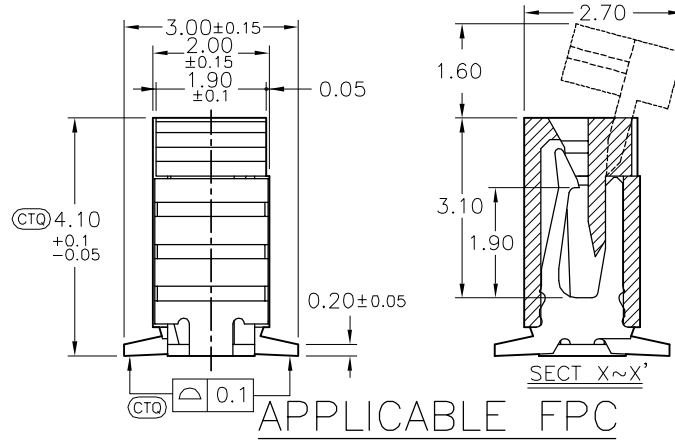
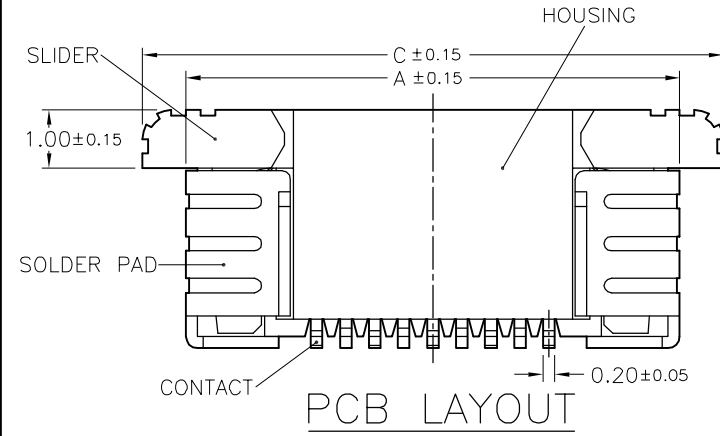
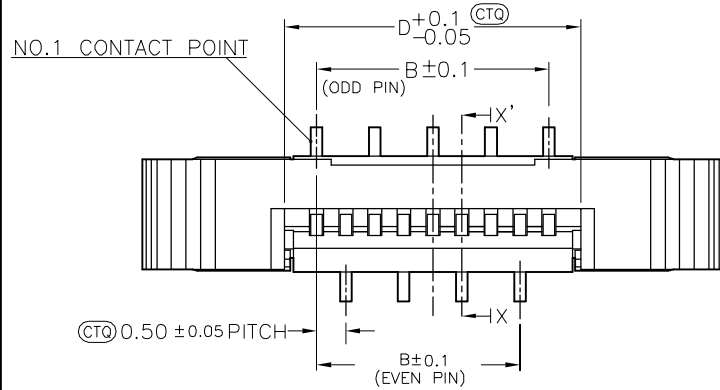


HF

NOTE:

- 1.MATERIAL:  
HOUSING:LCP  
SLIDER:LCP  
CONTACTS:PHOSPHOR BRONZE  
SOLDER PAD:BRASS
- 2.PLATING:  
CONTACTS:SEE ORDERING INFORMATION  
SOLDER PAD:SEE ORDERING INFORMATION
- 3.PART NO.:  
BL112H- xx SX - xx xx ND-TIN OVER NICKEL(LEAD FREE)  
GF-1u~3u" GOLD FLASH OVER NICKEL  
PACKAGING TA-EMBOSSED TAPE
- 4.RATING:  
OPERATING VOLTAGE:50V  
CURRENT RATING:0.4A  
OPERATING TEMPERATURE:-55°C ~ +85°C

REV.	ECO NO.	DATE	SIGN	DESCRIPTION
A	-	20181101	Elven	Release



No.of Contacts	Part Number	DIM. A	DIM. B	DIM. C	DIM. D
04	BL112H-04SX	6.0	1.5	7.5	2.6
05	BL112H-05SX	6.5	2.0	8.0	3.1
06	BL112H-06SX	7.0	2.5	8.5	3.6
07	BL112H-07SX	7.5	3.0	9.0	4.1
08	BL112H-08SX	8.0	3.5	9.5	4.6
09	BL112H-09SX	8.5	4.0	10.0	5.1
10	BL112H-10SX	9.0	4.5	10.5	5.6
11	BL112H-11SX	9.5	5.0	11.0	6.1
12	BL112H-12SX	10.0	5.5	11.5	6.6
13	BL112H-13SX	10.5	6.0	12.0	7.1
14	BL112H-14SX	11.0	6.5	12.5	7.6
15	BL112H-15SX	11.5	7.0	13.0	8.1
16	BL112H-16SX	12.0	7.5	13.5	8.6
17	BL112H-17SX	12.5	8.0	14.0	9.1
18	BL112H-18SX	13.0	8.5	14.5	9.6
19	BL112H-19SX	13.5	9.0	15.0	10.1
20	BL112H-20SX	14.0	9.5	15.5	10.6
21	BL112H-21SX	14.5	10.0	16.0	11.1
22	BL112H-22SX	15.0	10.5	16.5	11.6
23	BL112H-23SX	15.5	11.0	17.0	12.1
24	BL112H-24SX	16.0	11.5	17.5	12.6
25	BL112H-25SX	16.5	12.0	18.0	13.1
26	BL112H-26SX	17.0	12.5	18.5	13.6
27	BL112H-27SX	17.5	13.0	19.0	14.1
28	BL112H-28SX	18.0	13.5	19.5	14.6
29	BL112H-29SX	18.5	14.0	20.0	15.1
30	BL112H-30SX	19.0	14.5	20.5	15.6
31	BL112H-31SX	19.5	15.0	21.0	16.1
32	BL112H-32SX	20.0	15.5	21.5	16.6
33	BL112H-33SX	20.5	16.0	22.0	17.1
34	BL112H-34SX	21.0	16.5	22.5	17.6
35	BL112H-35SX	21.5	17.0	23.0	18.1
36	BL112H-36SX	22.0	17.5	23.5	18.6
37	BL112H-37SX	22.5	18.0	24.0	19.1
38	BL112H-38SX	23.0	18.5	24.5	19.6
39	BL112H-39SX	23.5	19.0	25.0	20.1
40	BL112H-40SX	24.0	19.5	25.5	20.6
41	BL112H-41SX	24.5	20.0	26.0	21.1
42	BL112H-42SX	25.0	20.5	26.5	21.6
43	BL112H-43SX	25.5	21.0	27.0	22.1
44	BL112H-44SX	26.0	21.5	27.5	22.6
45	BL112H-45SX	26.5	22.0	28.0	23.1
46	BL112H-46SX	27.0	22.5	28.5	23.6
47	BL112H-47SX	27.5	23.0	29.0	24.1
48	BL112H-48SX	28.0	23.5	29.5	24.6
49	BL112H-49SX	28.5	24.0	30.0	25.1
50	BL112H-50SX	29.0	24.5	30.5	25.6

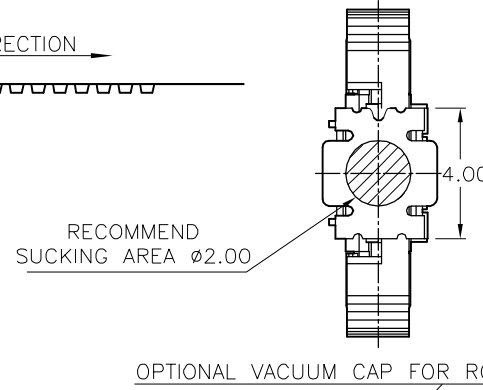
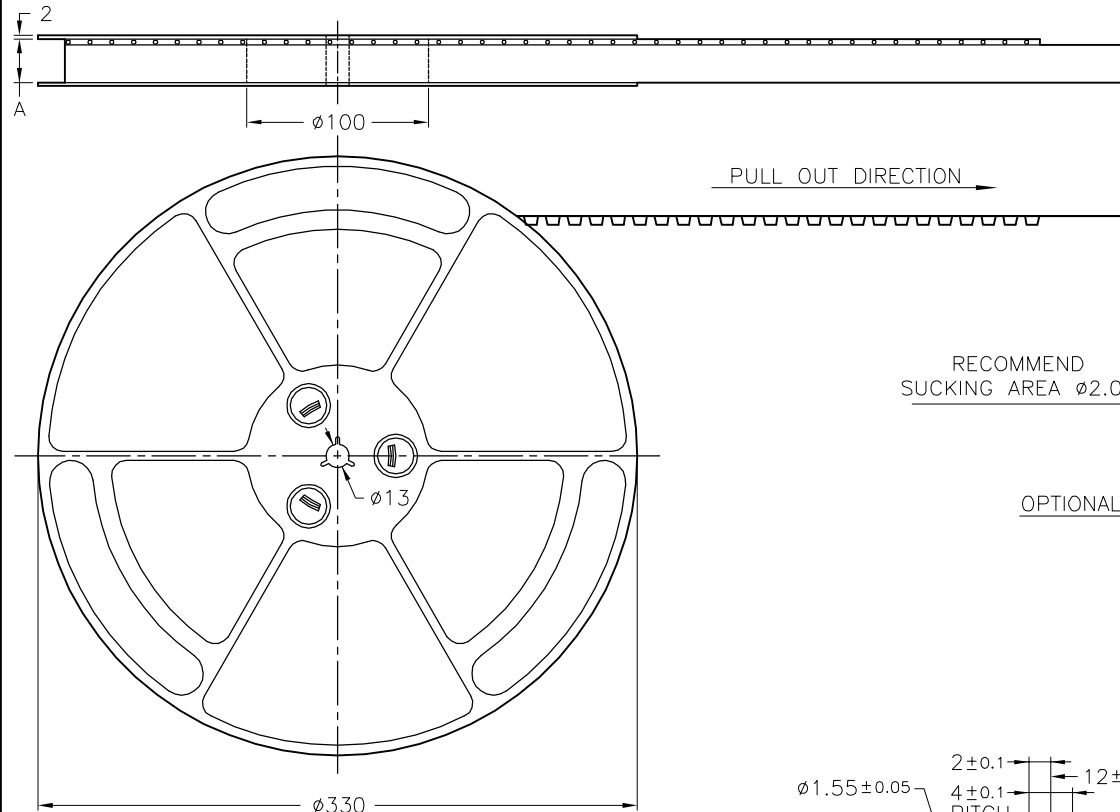
TOLERANCE UNLESS SPECIFIED	SHEET 1/3	DR. BY 王億仁	MATERIAL SEE NOTE 1.
LINEAR	SCALE 8/1	CHK. BY 詹文耀	FINISH SEE NOTE 2.
ANGLE	UNIT mm	APP. BY 詹文耀	PART NO.SEE NOTE 3.

**Kingmate Electronic Co., Ltd.**

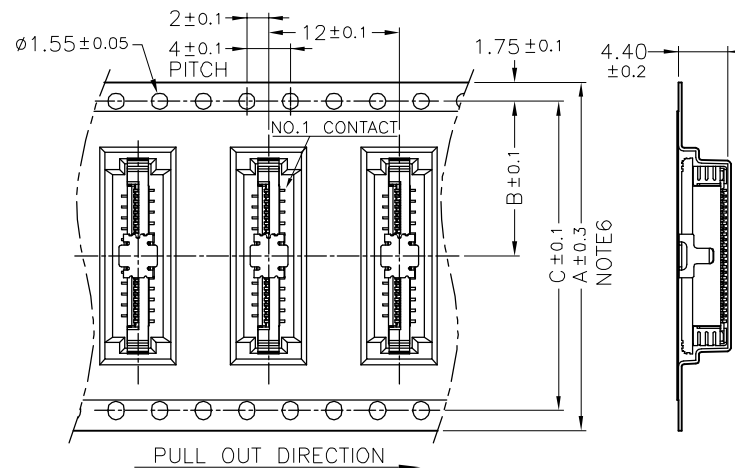
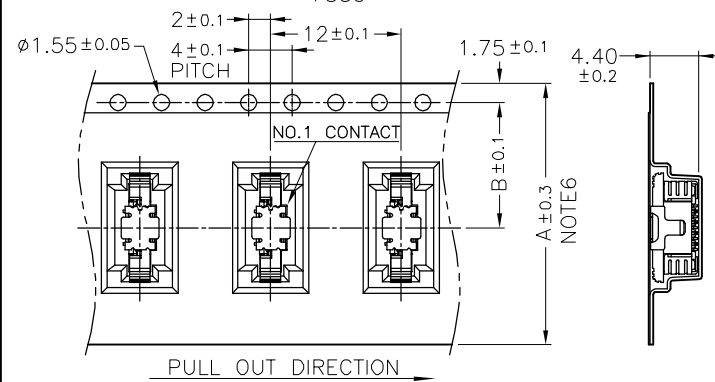
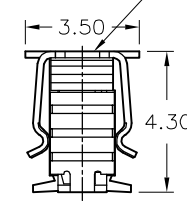
TITLE 0.5mm PITCH FPC/FFC CONNECTOR  
DWG NO. BL112H-xxSX-xxxx

HF  
EMBOSSED TAPE PACKING BL112H SERIES SX TYPE

REV.	ECO NO.	DATE	SIGN	DESCRIPTION
A	-	20181101	Elven	Release



OPTIONAL VACUUM CAP FOR ROBOTIC PLACEMENT



NOTE:

- 1.10 SPROCKET HOLE PITCH CUMULATIVE TOLERANCE  $\pm 0.2$ .
- 2.CARRIER CAMBER IS WITHIN 1 mm IN 100mm.
- 3.MATERIAL : BLACK CONDUCTIVE POLYSTYRENE ALLOY 100% RECYCLABLE.
- 4.THICKNESS :  $0.30 \pm 0.05$ mm
- 5.COMPONENT LOAD PER 13" REEL :1000 PCS.
- 6.FOR TAPE WIDTH (DIMENSION A) 24mm A PILOT HOLE IS PROVIDED ON ONE SIDE.  
FOR TAPE WIDTH (DIMENSION A) 32mm AND 44mm PILOT HOLES ARE PROVIDED ON BOTH SIDES.

Note6

NO.OF CONTACTS	PART NUMBER	DIM. A	DIM. B	DIM. C
04	BL112H-04SX	24	11.5	—
23	BL112H-23SX	32	14.2	28.4
24	BL112H-24SX	44	20.2	40.4
33	BL112H-33SX			
34	BL112H-34SX			
50	BL112H-50SX			

TOLERANCE UNLESS SPECIFIED		SHEET 2/3	DR. BY 王億仁	MATERIAL SEE NOTE 3.
LINEAR	ANGLE	SCALE	CHK. BY 詹文耀	FINISH
.XX XX	.X' XX	UNIT mm	APP. BY 詹文耀	PART NO.
.XXX XX	.XX' XX			

Kingmate Electronic Co., Ltd.

TITLE 0.5mm PITCH FPC/FFC CONNECTOR
DWG NO. BL112H-xxSX-xxxx

