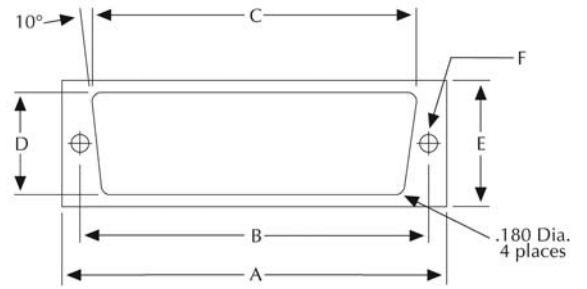


EMI Connector Gaskets, continued

"D" SUBMINIATURE CONNECTOR GASKETS



U.S. Customary
[SI Metric]

GASKET DIMENSIONS

PART NUMBER	MOUNTING METHOD	NUMBER OF CONNECTOR PINS	A	B	C	D	E	F
			± .020	± .005	± .010	± .010	± .020	± .005
42-X1700	Front Mounting	9	1.313	.984	.782	.450	.750	.140
42-X1701	Rear Mounting		1.313	.984	.665	.370	.750	.140
42-X1702	Front Mounting	15	1.641	1.312	1.110	.450	.750	.140
42-X1703	Rear Mounting		1.641	1.312	.993	.370	.750	.140
42-X1704	Front Mounting	25	2.188	1.852	1.650	.450	.750	.140
42-X1705	Rear Mounting		2.188	1.852	1.533	.370	.750	.140
42-X1706	Front Mounting	37	2.829	2.500	2.298	.450	.750	.140
42-X1707	Rear Mounting		2.829	2.500	2.181	.370	.750	.140
42-X1708	Front Mounting	50	2.740	2.406	2.200	.562	.860	.140
42-X1709	Rear Mounting		2.740	2.406	2.087	.480	.860	.140

NOTE: "D" Subminiature Connector Gaskets can be fabricated from any of Tecknit's sheet stock materials. Contact your nearest Tecknit representative or factory location for part numbers and design assistance.

