

# CH Products

## R-Series

### Removable Trackballs



# R-Series

## Removable Trackballs

R-Series Trackballs, CH Products' next generation of cursor control device feature a removable bezel to allow for regular maintenance and cleaning. Available in two sizes, optional features include backlit illumination, pushbutton switch strips, as well as vertical or horizontal mounting. R-Series trackballs are ideal for applications susceptible to light dust and moisture.

### Key Features

- Non-contacting optical encoders
- Polished stainless steel shafts
- High precision cartridge stainless steel bearings

### Available Models

R150

R200

### Physical Specifications

**Ball Diameter:**

#### R150

1.50"

#### R200

2.00"

**Tracking Force:**

10g

10g

**Weight:**

97g

235.5g

**Life Cycle (ball rotations):**

5,000,000

5,000,000

**Operating Temperature:**

-40°C to +85°C

-40°C to +85°C

### Protocol Options and Electrical Specifications

#### USB

Input:

4.75V – 5.25V @25mA max\*

Output:

USB 1.1

#### PS/2 (2/3BTN PS/2)

Input:

5.00V @ 25mA max\*

Output:

CMOS/TTL

\*+30mA for backlit illumination

### Configuration Options

Backlit illumination:

Red, Blue, Green, or Neutral

Pushbutton switch strips:

Two, three, or four (USB only) button

Connector cables

Conformal-coated PCB

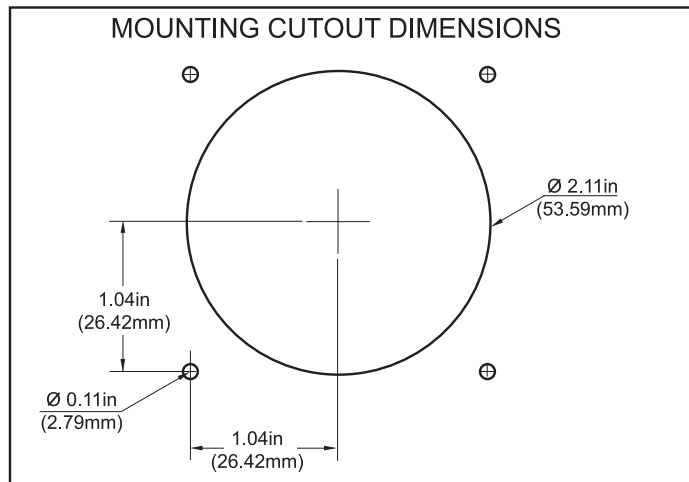
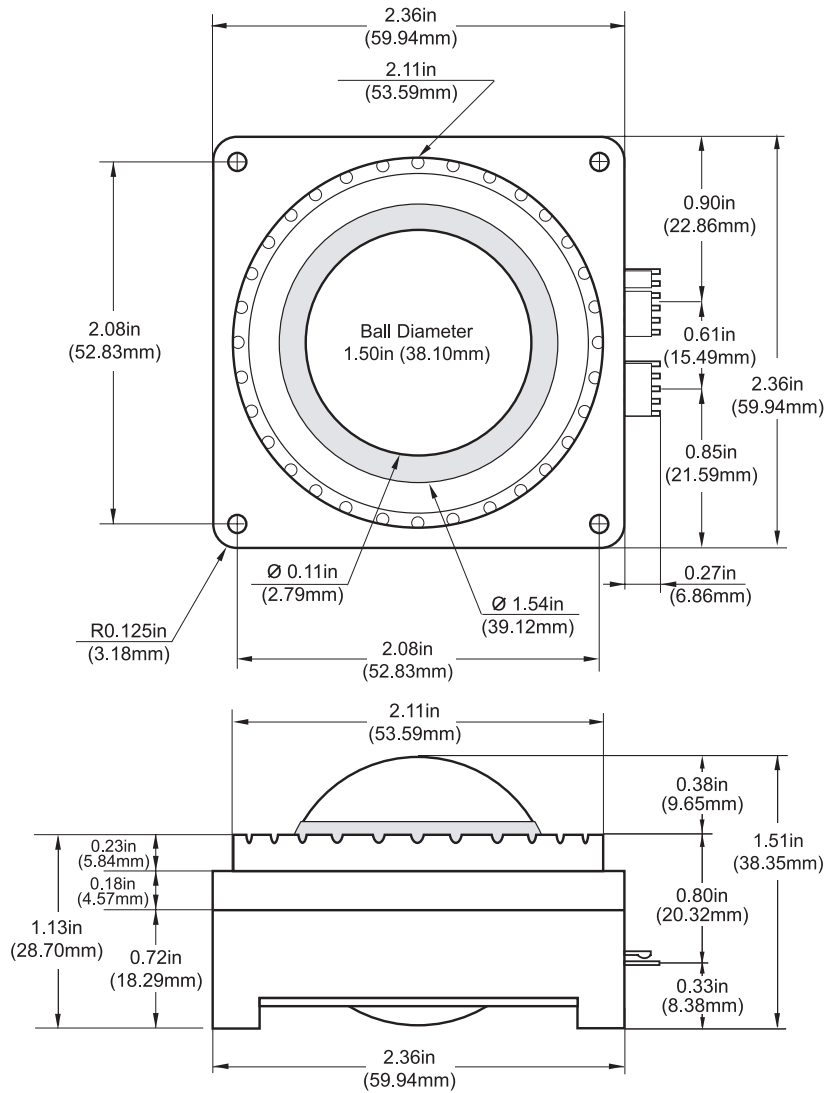
### Mounting Options

180° horizontal or 90° vertical (please specify when ordering)

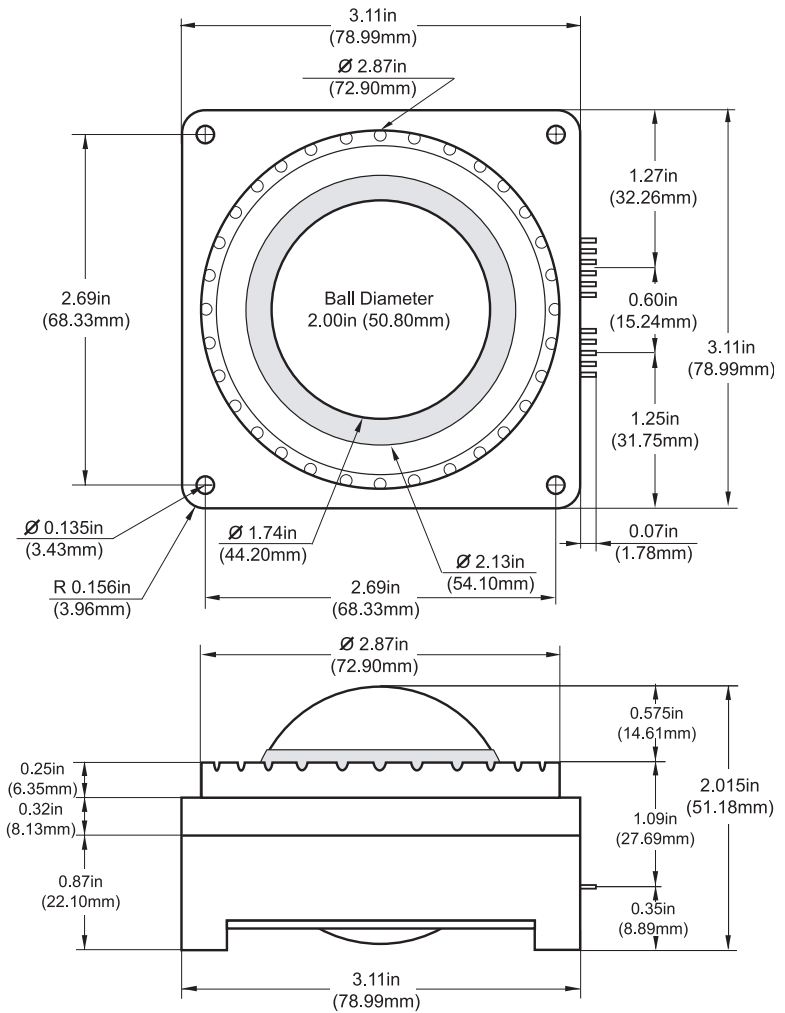
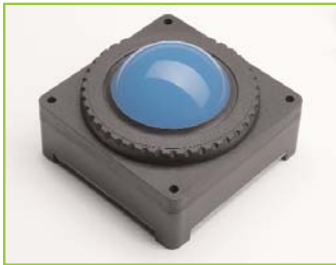
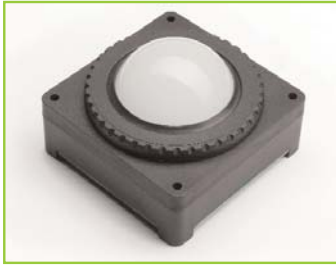
R150 and R200 balls should be cleaned with a mild soap solution.

All specifications are subject to change without notice.

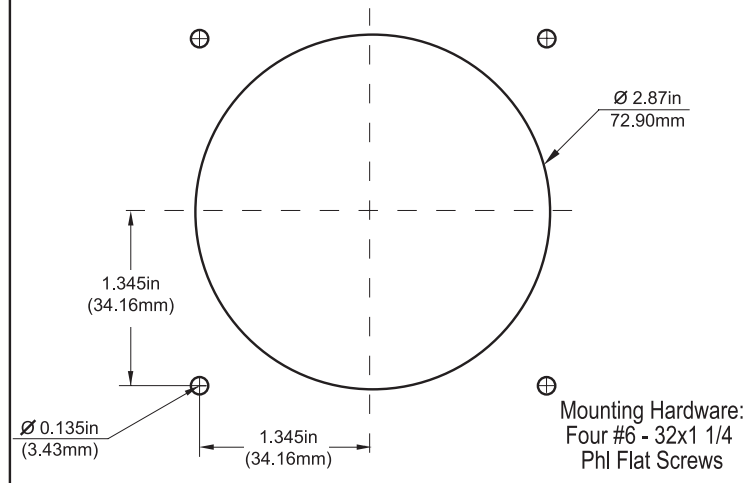
# RI50



# R200



## MOUNTING CUTOUT DIMENSIONS





# CH Products

## Button Strip Options

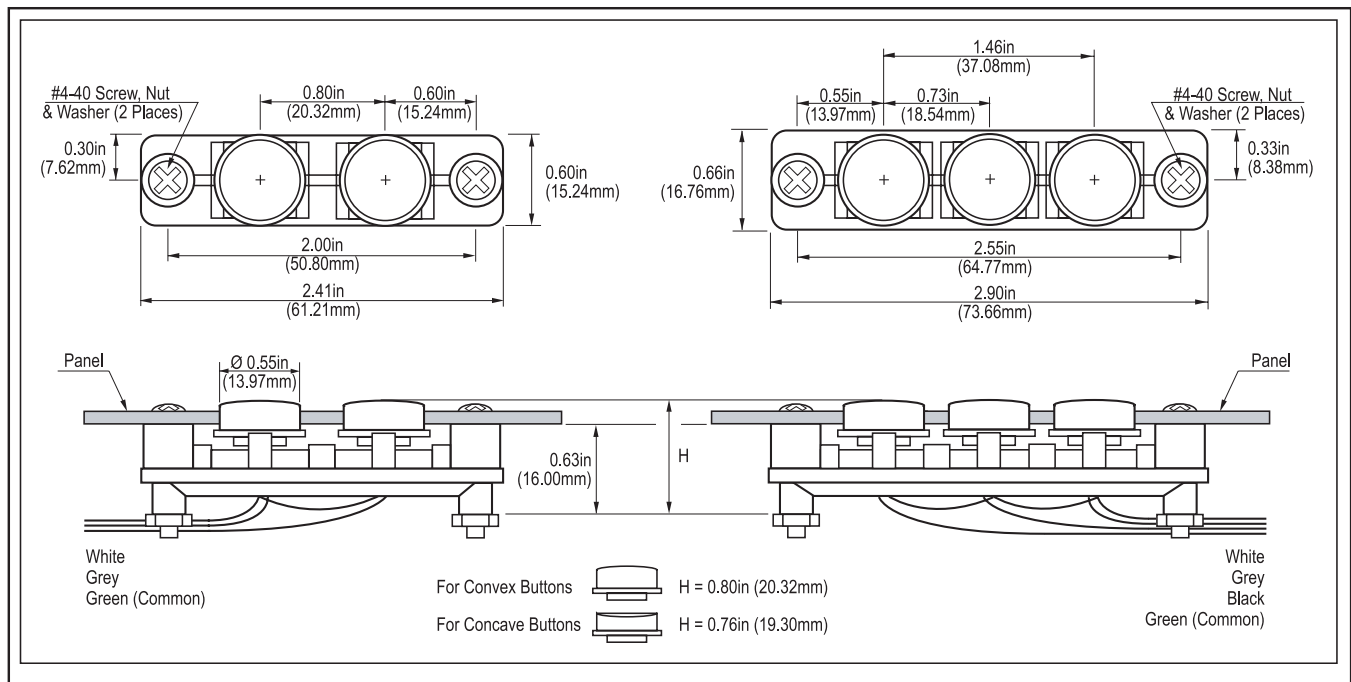
### Features

- Two, three or four (USB only) button
- Tactile feedback
- Normally open momentary contact switch
- 5,000,000 life cycle rating at 500mA at 12VDC
- Black or gray button caps
- Choice of convex or concave design

**2-BUTTON STRIP**



**3-BUTTON STRIP**



CH Products  
970 Park Center Drive  
Vista, CA 92081

Telephone (760) 598-2518  
Fax (760) 598-2524  
Email [oemsales@chproducts.com](mailto:oemsales@chproducts.com)  
Web Site [www.chproducts.com](http://www.chproducts.com)