



## Ordinance Waterseal Terminals

• For use with No.14-Single conductor cable - M13486/1-6 and No.12-Single conductor cable - M13486/1-7

| Part No. | Screw Dia. | A Dia. + .020 | B              | C     | D     | E     | F     | G     | H     | K     | L              | M Min |
|----------|------------|---------------|----------------|-------|-------|-------|-------|-------|-------|-------|----------------|-------|
| 7056700  | No.6       | 0.140         | 0.360<br>0.218 | 0.250 | 1.340 | 0.220 | 0.022 | 0.245 | 0.098 | 0.035 | 0.074<br>0.051 | 0.094 |
| 7056701  | No.8       | 0.169         | 0.410<br>0.343 | 0.281 | 1.340 | 0.220 | 0.022 | 0.245 | 0.098 | 0.035 | 0.074<br>0.042 | 0.156 |
| 7056702  | No.10      | 0.193         | 0.410<br>0.343 | 0.281 | 1.340 | 0.220 | 0.022 | 0.245 | 0.098 | 0.035 | 0.074<br>0.042 | 0.156 |
| 7056703  | 1/4        | 0.260         | 0.594<br>0.437 | 0.360 | 1.562 | 0.220 | 0.022 | 0.245 | 0.098 | 0.035 | 0.050<br>0.033 | 0.200 |
| 7056704  | 5/16       | 0.320         | 0.594<br>0.500 | 0.390 | 1.562 | 0.220 | 0.022 | 0.245 | 0.098 | 0.035 | 0.050<br>0.028 | 0.240 |
| 7056705  | 3/8        | 0.385         | 0.594<br>0.510 | 0.441 | 1.592 | 0.220 | 0.022 | 0.245 | 0.098 | 0.035 | 0.050<br>0.027 | 0.250 |



[VIEW NATIONAL STOCK NUMBERS »](#)

## THE AMERLINE CHALLENGE

We are so confident of our ability to deliver a connector that meets your requirements that we're proud to offer the Amerline Challenge. Take the Challenge and request your **free sample** today!

**Take the Challenge »**

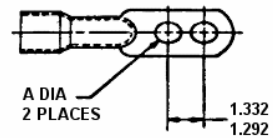
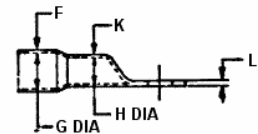
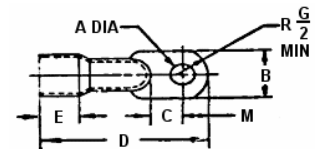
### Product Quick Links

- [▶ Connectors Home](#)
- [▶ MS Single Wire Connectors](#)

• For use with No.14-Single conductor cable - M13486/1-5 and No.12 & 14-Multi-conductor cable

| Part No. | Screw Dia. | A Dia. + .020 | B              | C     | D     | E     | F     | G     | H     | K     | L              | M Min |
|----------|------------|---------------|----------------|-------|-------|-------|-------|-------|-------|-------|----------------|-------|
| 7056706  | No.6       | 0.140         | 0.360<br>0.218 | 0.250 | 1.280 | 0.220 | 0.028 | 0.166 | 0.098 | 0.035 | 0.074<br>0.051 | 0.094 |
| 7056707  | No.8       | 0.169         | 0.410<br>0.343 | 0.281 | 1.312 | 0.220 | 0.028 | 0.166 | 0.098 | 0.035 | 0.074<br>0.042 | 0.156 |
| 7056708  | No.10      | 0.193         | 0.410<br>0.343 | 0.281 | 1.312 | 0.220 | 0.028 | 0.166 | 0.098 | 0.035 | 0.074<br>0.042 | 0.156 |
| 7056709  | 1/4        | 0.260         | 0.594<br>0.437 | 0.360 | 1.562 | 0.220 | 0.028 | 0.166 | 0.098 | 0.035 | 0.050<br>0.033 | 0.200 |
| 7056710  | 5/16       | 0.320         | 0.594<br>0.500 | 0.390 | 1.562 | 0.220 | 0.028 | 0.166 | 0.098 | 0.035 | 0.050<br>0.028 | 0.240 |
| 7056711  | 3/8        | 0.385         | 0.594<br>0.510 | 0.437 | 1.592 | 0.220 | 0.028 | 0.166 | 0.098 | 0.035 | 0.050<br>0.028 | 0.250 |

### Waterseal Terminals



• For use with No.8-Single conductor cable - M13486/1-9

| Part No. | Screw Dia. | A Dia. + .020 | B              | C     | D     | E     | F     | G     | H     | K     | L              | M Min |
|----------|------------|---------------|----------------|-------|-------|-------|-------|-------|-------|-------|----------------|-------|
| 7056712  | No.10      | 0.193         | 0.440<br>0.343 | 0.281 | 1.680 | 0.280 | 0.032 | 0.370 | 0.176 | 0.036 | 0.115<br>0.062 | 0.156 |
| 7056713  | 1/4        | 0.260         | 0.594<br>0.440 | 0.281 | 1.875 | 0.280 | 0.032 | 0.370 | 0.176 | 0.036 | 0.074<br>0.054 | 0.218 |
| 7056714  | 5/16       | 0.320         | 0.594<br>0.531 | 0.469 | 1.970 | 0.280 | 0.032 | 0.370 | 0.176 | 0.036 | 0.074<br>0.043 | 0.250 |
| 7056715  | 3/8        | 0.385         | 0.594<br>0.531 | 0.437 | 1.970 | 0.280 | 0.032 | 0.370 | 0.176 | 0.036 | 0.074<br>0.043 | 0.250 |

• For use with No.8-Multi-conductor cable

| Part No. | Screw Dia. | A Dia. + .020 | B              | C     | D     | E     | F     | G     | H     | K     | L              | M Min |
|----------|------------|---------------|----------------|-------|-------|-------|-------|-------|-------|-------|----------------|-------|
| 7056716  | No.10      | 0.193         | 0.440<br>0.343 | 0.281 | 1.680 | 0.280 | 0.036 | 0.251 | 0.176 | 0.036 | 0.120<br>0.062 | 0.156 |
| 7056717  | 1/4        | 0.260         | 0.594<br>0.440 | 0.281 | 1.875 | 0.280 | 0.036 | 0.251 | 0.176 | 0.036 | 0.074<br>0.054 | 0.218 |
| 7056718  | 5/16       | 0.320         | 0.594<br>0.531 | 0.469 | 1.970 | 0.280 | 0.036 | 0.251 | 0.176 | 0.036 | 0.074<br>0.053 | 0.250 |
| 7056719  | 3/8        | 0.385         | 0.594<br>0.531 | 0.437 | 1.970 | 0.280 | 0.036 | 0.251 | 0.176 | 0.036 | 0.074<br>0.043 | 0.250 |



8364246 ONLY

## • For use with No.6-Single conductor cable - M13486/1-10

| Part No. | Screw Dia. | A Dia. + .020 | B              | C     | D     | E     | F     | G     | H     | K     | L              | M Min |
|----------|------------|---------------|----------------|-------|-------|-------|-------|-------|-------|-------|----------------|-------|
| 7056720  | No.10      | 0.193         | 0.531<br>0.437 | 0.250 | 1.780 | 0.350 | 0.038 | 0.432 | 0.218 | 0.029 | 0.140<br>0.053 | 0.156 |
| 7056721  | 1/4        | 0.260         | 0.594<br>0.470 | 0.250 | 1.875 | 0.350 | 0.038 | 0.432 | 0.218 | 0.029 | 0.155<br>0.053 | 0.218 |
| 7056722  | 5/16       | 0.320         | 0.650<br>0.531 | 0.375 | 2.031 | 0.350 | 0.038 | 0.432 | 0.218 | 0.029 | 0.115<br>0.041 | 0.250 |
| 7056723  | 3/8        | 0.385         | 0.650<br>0.531 | 0.375 | 2.031 | 0.350 | 0.038 | 0.432 | 0.218 | 0.029 | 0.155<br>0.041 | 0.250 |

## • For use with No.6-Multi-conductor cable

| Part No. | Screw Dia. | A Dia. + .020 | B              | C     | D     | E     | F     | G     | H     | K     | L              | M Min |
|----------|------------|---------------|----------------|-------|-------|-------|-------|-------|-------|-------|----------------|-------|
| 7056724  | No.10      | 0.193         | 0.531<br>0.437 | 0.250 | 1.781 | 0.350 | 0.025 | 0.348 | 0.218 | 0.029 | 0.140<br>0.053 | 0.156 |
| 7056725  | 1/4        | 0.260         | 0.594<br>0.470 | 0.250 | 1.906 | 0.350 | 0.025 | 0.348 | 0.218 | 0.029 | 0.155<br>0.053 | 0.218 |
| 7056726  | 5/16       | 0.320         | 0.650<br>0.531 | 0.375 | 2.031 | 0.350 | 0.025 | 0.348 | 0.218 | 0.029 | 0.115<br>0.041 | 0.250 |
| 7056727  | 3/8        | 0.385         | 0.650<br>0.531 | 0.375 | 2.031 | 0.350 | 0.025 | 0.348 | 0.218 | 0.029 | 0.155<br>0.041 | 0.250 |

## • For use with No.2-Single conductor cable - M13486/1-12

| Part No. | Screw Dia. | A Dia. + .020 | B              | C     | D     | E     | F     | G     | H     | K     | L              | M Min |
|----------|------------|---------------|----------------|-------|-------|-------|-------|-------|-------|-------|----------------|-------|
| 7056728  | 1/4        | 0.260         | 0.718<br>0.656 | 0.453 | 2.650 | 0.410 | 0.036 | 0.620 | 0.347 | 0.040 | 0.140<br>0.080 | 0.344 |
| 7056729  | 5/16       | 0.320         | 0.718<br>0.656 | 0.453 | 2.650 | 0.410 | 0.036 | 0.620 | 0.347 | 0.040 | 0.140<br>0.080 | 0.344 |
| 7056730  | 3/8        | 0.385         | 0.718<br>0.656 | 0.453 | 2.650 | 0.410 | 0.036 | 0.620 | 0.347 | 0.040 | 0.140<br>0.080 | 0.344 |
| 7992775  | 1/2        | 0.515         | 0.812<br>0.734 | 0.453 | 2.843 | 0.410 | 0.036 | 0.620 | 0.347 | 0.040 | 0.140<br>0.080 | 0.406 |
| 8364246  | 3/8        | 0.396         | 0.718<br>0.656 | 0.532 | 4.046 | 0.410 | 0.036 | 0.620 | 0.347 | 0.040 | 0.140<br>0.080 | 0.344 |

## • For use with No.0-Single conductor cable - M13486/1-14

| Part No. | Screw Dia. | A Dia. + .020 | B              | C     | D     | E     | F     | G     | H     | K     | L              | M Min |
|----------|------------|---------------|----------------|-------|-------|-------|-------|-------|-------|-------|----------------|-------|
| 7056731  | 5/16       | 0.320         | 0.780<br>0.656 | 0.453 | 2.718 | 0.470 | 0.044 | 0.682 | 0.432 | 0.047 | 0.168<br>0.105 | 0.344 |
| 7056732  | 3/8        | 0.385         | 0.780<br>0.656 | 0.453 | 2.718 | 0.470 | 0.044 | 0.682 | 0.432 | 0.047 | 0.168<br>0.105 | 0.344 |
| 7335520  | 1/2        | 0.515         |                | 0.562 | 2.937 | 0.470 | 0.044 | 0.682 | 0.432 | 0.047 |                | 0.406 |
|          |            |               | 0.843          |       |       |       |       |       |       |       | 0.160          |       |
|          |            |               | 0.761          |       |       |       |       |       |       |       | 0.080          |       |

## • For use with No.16-Single conductor cable - M13486/1-6

| Part No. | Screw Dia. | A Dia.<br>+ .020 | B              | C     | D     | E     | F     | G     | H     | K     | L              | M<br>Min |
|----------|------------|------------------|----------------|-------|-------|-------|-------|-------|-------|-------|----------------|----------|
| 7728640  | No.6       | 0.142            | 0.343<br>0.281 | 0.218 | 1.203 | 0.109 | 0.016 | 0.145 | 0.061 | 0.021 | 0.074<br>0.035 | 0.125    |
| 7728764  | No.8       | 0.168            | 0.406<br>0.281 | 0.266 | 1.203 | 0.141 | 0.016 | 0.145 | 0.061 | 0.021 | 0.050<br>0.030 | 0.125    |
| 7728777  | No.10      | 0.193            | 0.406<br>0.280 | 0.266 | 1.203 | 0.141 | 0.016 | 0.145 | 0.061 | 0.021 | 0.050<br>0.030 | 0.125    |
| 7728778  | 1/4        | 0.260            | 0.594<br>0.406 | 0.344 | 1.375 | 0.109 | 0.016 | 0.145 | 0.061 | 0.021 | 0.039<br>0.019 | 0.218    |
| 7728779  | 5/16       | 0.320            | 0.594<br>0.406 | 0.344 | 1.375 | 0.172 | 0.016 | 0.145 | 0.061 | 0.021 | 0.039<br>0.019 | 0.218    |
| 7728780  | 3/8        | 0.385            | 0.609<br>0.515 | 0.344 | 1.400 | 0.109 | 0.016 | 0.145 | 0.061 | 0.021 | 0.039<br>0.019 | 0.250    |

## • For use with No.4-Single conductor cable - M13486/1-11

| Part No. | Screw Dia. | A Dia.<br>+ .020 | B              | C     | D     | E     | F     | G     | H     | K     | L              | M<br>Min |
|----------|------------|------------------|----------------|-------|-------|-------|-------|-------|-------|-------|----------------|----------|
| 7064829  | 3/8        | 0.385            | 0.781<br>0.594 | 0.375 | 2.187 | 0.350 | 0.035 | 0.495 | 0.274 | 0.035 | 0.135<br>0.069 | 0.359    |
| 8689218  | No.10      | 0.193            | 0.594<br>0.500 | 0.281 | 1.968 | 0.350 | 0.035 | 0.495 | 0.274 | 0.035 | 0.143<br>0.083 | 0.218    |
| 8689219  | 1/4        | 0.260            | 0.594<br>0.500 | 0.281 | 1.968 | 0.350 | 0.035 | 0.495 | 0.274 | 0.035 | 0.143<br>0.083 | 0.218    |
| 8689220  | 5/16       | 0.320            | 0.781<br>0.594 | 0.375 | 2.187 | 0.350 | 0.035 | 0.495 | 0.274 | 0.035 | 0.140<br>0.069 | 0.359    |
| 8689221  | 1/2        | 0.515            | 0.797<br>0.734 | 0.453 | 2.343 | 0.350 | 0.035 | 0.495 | 0.274 | 0.035 | 0.140<br>0.054 | 0.406    |