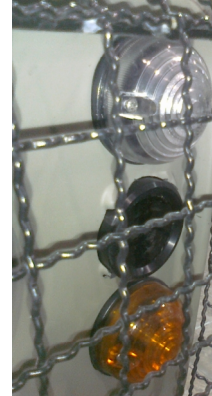
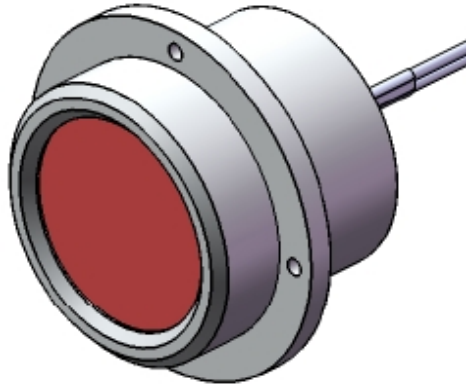


## DPI - 013 Infra-Red Driving Projectors



### Applications

Military Vehicles  
Law Enforcement  
Security Vehicles  
Peacekeeping Operations  
Outdoor and Wildlife observation

DPI - 013 series of high intensity Infra-Red illuminators enables driving and situational awareness at night, using Night Vision Goggles and Image Intensifiers of all kinds in total darkness.

The Projectors are rugged and sealed, designed for harsh environments and severe operating conditions, featuring military grade components and materials. Using three High intensity LEDs assures long life operation.

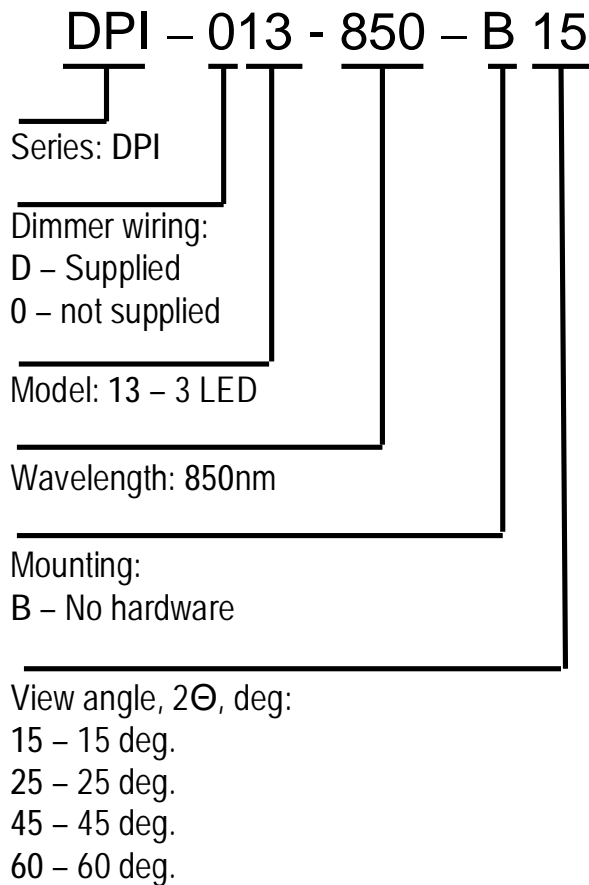
A Compact design and several mounting options allow a variety of applications on many types of vehicles.

Other features such as different wavelength, wiring for an external dimmer, mounting and finishing options are available upon request.

## Specifications

LED array Wavelength	850nm
Radiant power	540mW
Power Consumption	4.7 W
Input Voltage	7 to 32 V DC
Weight	275g
Protection	IP66
Operating Temperature	-35°C to +54°C
Operating Humidity	5% to 100%
Finish	Black Anodize

## Ordering information



Use 5k $\Omega$  potentiometer for dimming with D13 option  
Other options are available upon request

---

Specifications are subject to change without notice

© Elimec Electromechanical Engineering (1988) LTD. [www.elimec.co.il](http://www.elimec.co.il)  
POB5006, Rishon Letzion 75150 ISRAEL | [mail@elimec.co.il](mailto:mail@elimec.co.il) | Phone +972-3-9592500

## Outline Dimensions

