

Elimec Electromechanical Engineering (1988) Ltd was established in 1988 and is known in the Israeli Hi-Tech Market for its intense activity as an exclusive representative and distributor for leading manufacturers, promoting the sales of their components & technologies for commercial and military users.



Elimec specializes in the design & marketing of electromechanical components, systems and related products for Defense, Aerospace, Medical, Communication & Automotive applications. Elimec provides engineering support for our customers' customized applications.

In addition Elimec has a production unit with certified capabilities such as Military & Aerospace grade harness assemblies, X-Y cutting of thermal pads and customized RFI conductive O-ring vulcanization. Elimec has on site Testing equipment such as RF & MW Network Analyzer, High voltage cable testing, Pull testers (up to 5000N), and sealing testing.



Our customers include Applied Materials, Elbit Systems, Flex, Israel Aerospace Industries, Rafael, Medtronic, and many other leading companies in Israel and India – which are served by our Bangalore sales office.

Elimec is AS9100D and IPC620 level 3 certified.





ariba.com.tw

 **GTC** GT Contact Co., Ltd.

gtcontact.com



saib.fr





eaton.com

MAGNETIC SENSOR SYSTEM

magneticsensorsystems.com



safran-group.com



sensata.com



te.com



godymt.com





apem.com



atoms-monaco.com



cursorcontrols.com



linemaster.com



nsi-be.com



korrry.com

THERMAL IMAGING SOLUTIONS, LAND SYSTEMS

Military, Automotive & Industrial Solutions



en.ark-vision-systems.com



brigade-electronics.com



lightwarelidar.com



luminartech.com

flir.com













fujipoly.com



minco.com



magnetic-shield.com



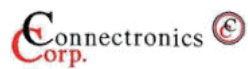
parker.com







pacific-capacitor.com



connectronicscorp.com



ahv.com

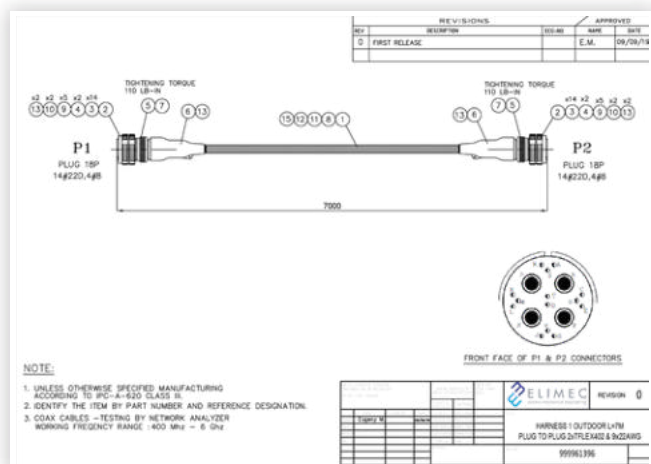
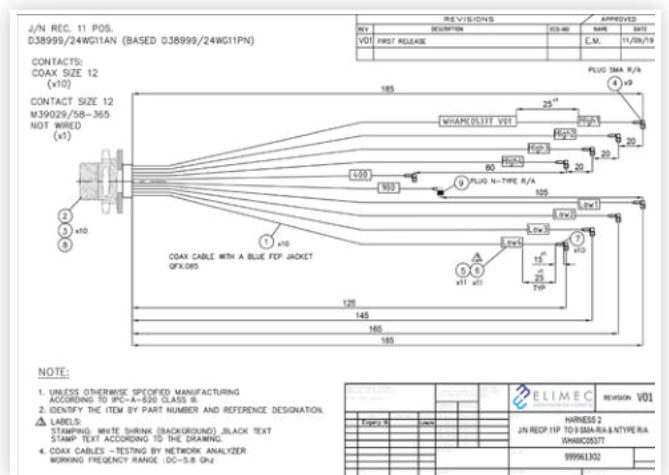
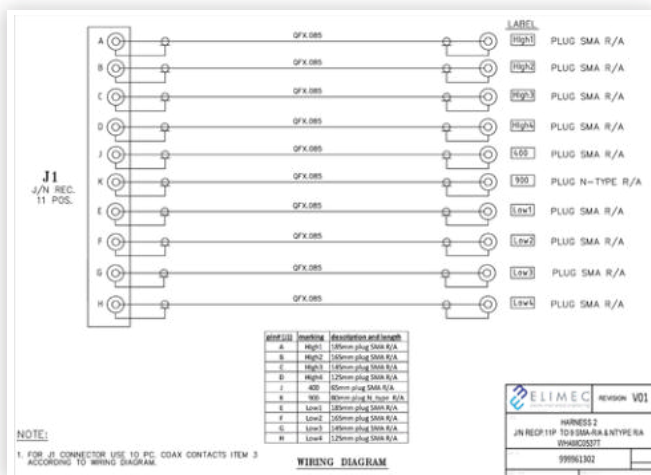
Complete custom solutions, including the initial concept, design, drawing, engineering, sample production & approval, full scale production and final testing.

Performance assembly design, drawings for cable & harnesses including component engineering.

Performance assembly drawings and work sheets in all major formats, including AutoCAD, Visio and others, per customer's request.

Dealing with all aspects of product design, components selection, adjustments & modifications, final product work drawings, prototypes production and final approval.

Value engineering (cost reduction).



PART LIST

ELIMEC P/N	DESCRIPTION	MAN P/N	MANUFACTURER	QTY	UOM
99964287	TPLEX 402	TPLEX 402	Times Microwave	14.5	METER
99964511	PLUG 18C 14#220, 4#8 Twisted P/N	80251P 18P	SOULTRAU	2	EA
99964512	CONNECTOR PIN 22AWG 17#	MS7388R 18P	QPL	28	EA
99967775	SMA Pin D38999 Contact (See # for 14C Cable)	5FAD1-001	TSW	4	EA
99969065	STRAIGHT BAND ADAPTER SIZE 18 (1) D38999	27148R1811045	ELECTRO ADAPTER	2	EA
12013	ROOT	382142 25-8	TE	2	EA
99969188	SAFETY TERMINATION BAND 0.25 inch x 0.25 inch	214L706	ELECTRO ADAPTER	2	EA
2801	WIRE ZIGZAG 3L ET 1 180V 150K WHITE	BAZ25W 32-22-8	QPL	67	METER
99969189	SPRING SEALING PLUG SIZE 22	MS7388R 22-2	QPL	5	EA
99969204	SPRING SEALING PLUG SIZE 8	MS7388R 8-3	QPL	2	EA
99969245	BRASS TUBULAR COPPER TINES DIA. 0.360 inch	AA3068R3620509	QPL	7.13	METER
99967774	ON SWR WEAIR TUBS 30.5 (1/4") BLACK	DR-25-3/4-0-SP	TE	7	METER
99961191	A-SERVO E-DRIVE "MATE" M-15571 1/4"X1/8" KIT	1117A-41-8	TE	0.08	EA
	Piggy back ground for contact size B	5X 900415		4	EA
99964504	BRACED SLEEVE 8.1X 7.1X 20 DIA PACE = 25M	CP5208 25	ABB	0.2817M	EA

ELIMEC REVISION 0
HARNESS 1 OUTDOOR L7M
PLUG TO PLUG 2xTPLEX402 & 8x22AWG
99961396

Manufacturing stages and processes are conducted according to Military /Aerospace & Industrial standards (IPC/WHMA-A-620/ AS9100-D/ ISO9001)



Sealed plugs and cable assembly upto IP68

Spliced conductive O-rings, conductive gaskets cut into shape according to customer drawing (as Parker Chomerics Authorized Distributor-Fabricators Elimec)

Manufacturing capabilities of all types of cables & harnesses assembly for military, aerospace and medical industries, telecommunications infrastructure, communications systems, navigation, control & monitoring systems in airborne, mobile and stationary platforms



Thermal pads cut into shape

RF cable assembly up to 18 GHz














Plasma Etching wires/elastomers



RF & Microwave Coaxial cable assemblies with testing by Network Analyzer (upto 18 GHz)



Items continuously in Stock:

- | | |
|---|--|
|  Bands-214LF |  M85049 |
|  DT/DTM |  MS21026/7-E231 |
|  D38999/2X |  MS25036 |
|  D38999/3X |  MS3320 |
|  EZ/TC |  MS345X |
|  LMR/RG |  MS347X |
|  CABLES |  MS90311-231 |
|  M22759 |  271XX |
|  M24308 | |

For more items in stock visit in our website: www.elimec-eng.com

ELIMEC Electro-Mechanical Engeneering



Israel - Headquarters

Tel: +972-73-2629600
 Fax: +073-2629695
 Email: mail@elimec.co.il
 1 Lishansky st. Rishon
 Le-Zion, 7565016 Israel
 Mailing Address P.O Box
 5006, Rishon Le-Zion,
 7515001 Israel



India - Bangalore

Tel: +91 9035006906
 Email: bangalore-office@
 elimec.co.il

India - Bangalore

Tel: +91 9611773447
 Email: delhi-office@
 elimec.co.il



US subsidiary

Elimec USA:

Tel: 410-896-6799
 Email: Office@elimec-us.com
 8221 Preston Ct. Suite A
 Jessup MD 20794
 USA

www.elimec.co.il